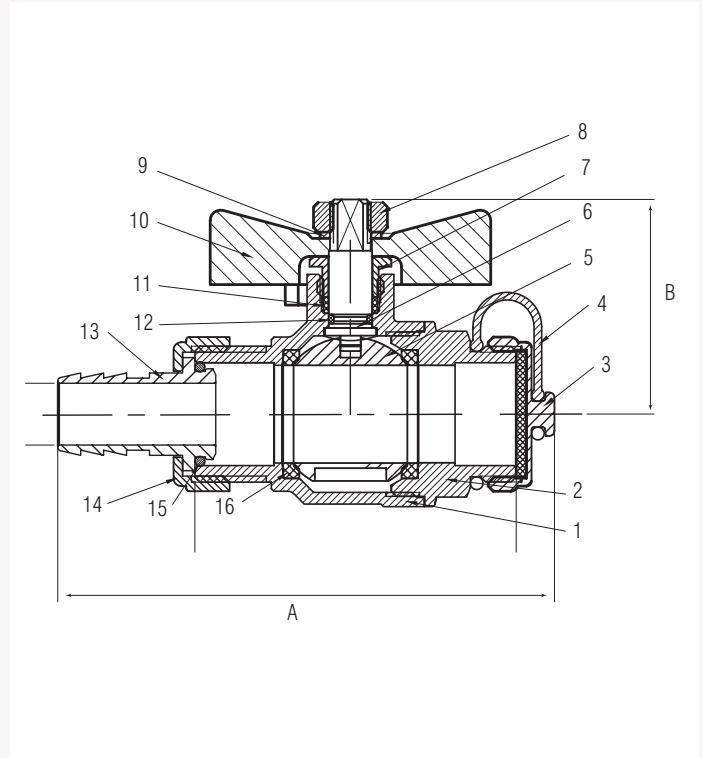


1256 Quarter Turn Ball Valve PN16 - (DZR) - hose union drain tap



Material specification

1256 Tee handle version 1/2" to 3/4"			
No	Component	Material	Specification
1	Body	DZR brass	EN 12165 CW602N
2	End cap	DZR brass	EN 12165 CW602N
3	Dust cap	Brass	EN 12165 CW617N-DW
4	Retaining strap	EPDM	EN 2430: 1995
5	Ball	DZR brass	EN 12165 CW602N
6	Stem	DZR brass	EN 12164 CW602N
7	Stem nut	DZR brass	EN 12164 CW602N
8	Nut	Stainless steel	ISO 15510
9	Spring washer	Stainless steel	ISO 15510
10	Tee handle	Aluminium	EN 1706 LM6
11	Gland	PTFE	PTFE
12	O-ring	EPDM	EN 2430: 1995
13	Hose union	Brass	EN 12165 CW617N-DW
14	Retaining cap	Brass	EN 12165 CW617N-DW
15	O-ring	EPDM	EN 2430: 1995
16	Ball seat	PTFE	PTFE

Features and benefits:

- Full bore quarter turn ball valve.
- Full DZR construction.
- Blow out proof stem.
- End connections, male parallel threads to ISO 228.
- Supplied with hose union and dust cap.

1256 Ball valve

Order code ISO 228	Size	DN	A	B	Kv value	Weight (kg)
125650MHT160404	1/2"	15	93	38	16	0.252
125650MHT160606	3/4"	20	97	41	30	0.380

Valve suitability

Product	Steam	Water	Drinking water	Oil	Air (oil free)	Gas (inert)	Gas (combustible)	Gas (corrosive)	Gas (oxygen)
1256	x	✓	✓	✓	✓	x	x	x	x

This valve is not suitable for gas applications.

Max. working parameters

1256	Temperature °C	Pressure bar	Pressure psi
Water	-20 to +80	16	230

Specification clauses:

- Tee handle operated quarter turn, tight shut-off.
- DZR brass body stem and cap.
- Chrome plated brass ball.
- PTFE seats and stem seals.
- EPDM stem O-ring.
- End connections, male parallel threads to ISO 228.
- WRAS approved for drinking water applications.
- Suitable for low temperature hot water and chilled systems.
- Supplied with hose union and dust cap.